

Maxus Portal

Maxus Portal is an Inmagic® DB/TextWorks® application designed to store information pertaining to web sites or web pages. The textbase administrator creates a record for each site or page, either using the Inmagic.net *Cataloguing Web Pages* feature or by entering data manually.

Inmagic DB/Text (or *Content Server WebPublisher PRO*) provides access to the collected information in a screen that is customised for ease of use.

The Maxus Portal enquiry screen provides end users with a simple, clear web layout. They can enter keywords of their choice or they can use ready-made "canned searches" to link straight to the information they need.

Maxus Portal also comes with an enquiry screen for more advanced users who feel comfortable with searching for specific information in specific fields.

Previous Records Next 3 Records < <<

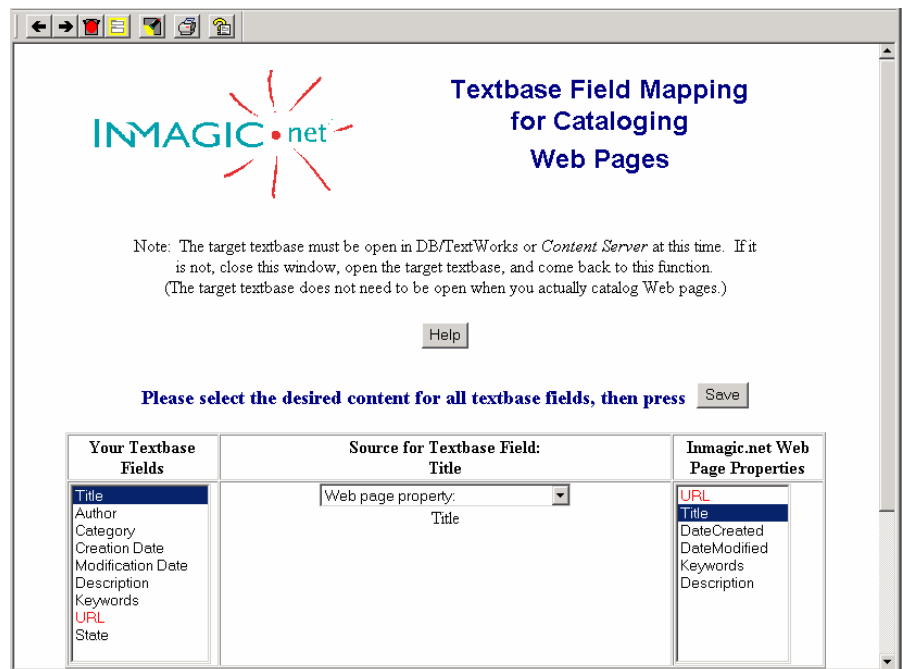
Maxus Australia - Australian media resources portal	
You have retrieved 13 records	
1	theage.com.au / The Age Description: The Age Online - News online - News Web site: http://www.theage.com.au/ More details
2	smh.com.au / The Sydney Morning Herald Description: The Sydney Morning Herald - News online - News Web site: http://www.smh.com.au/ More details
3	Australian Financial Review Description: Financial Review - the Asia-Pacific region's pre-eminent source of business and finance news and analysis, political commentary and opinion. Web site: http://afr.com/ More details

Search results are presented in a crisp screen that gives the end user basic information about the items retrieved and a link to relevant web sites or pages.

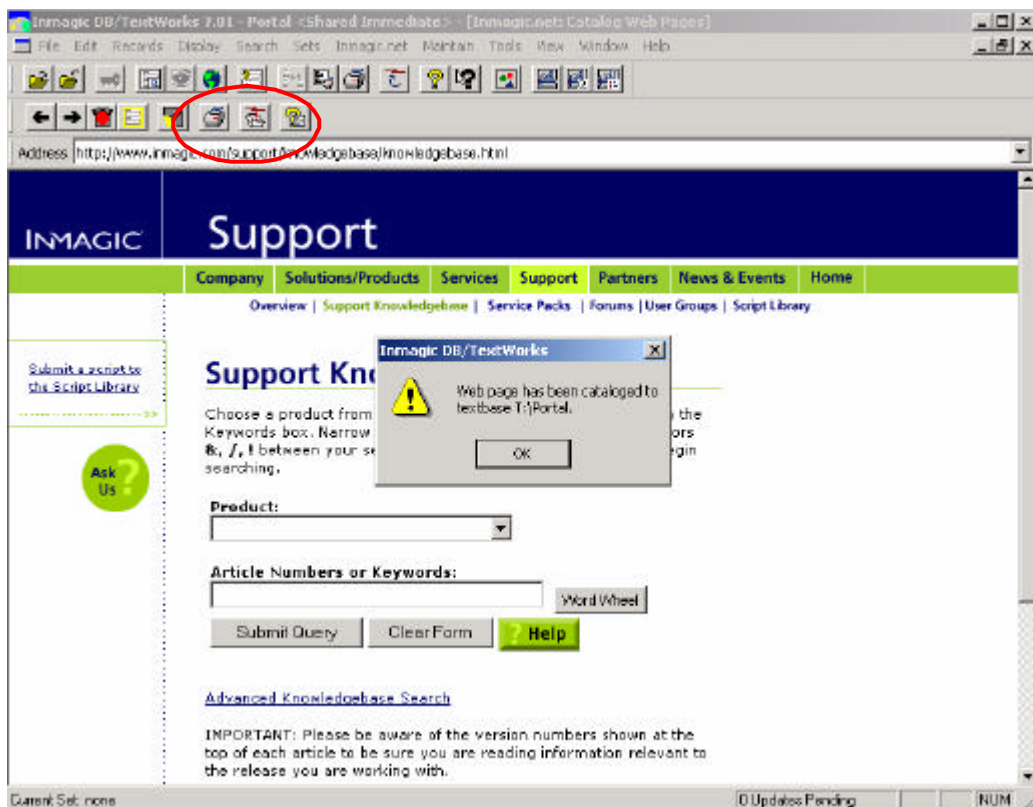
The sample screens shown on this brochure illustrate how Maxus Portal can be used to provide effortless access to web resources on Australian media. Maxus Portal can be customised to your particular requirements - you could easily tailor it to manage information on web resources relating to your competitors, current research in topics of interest to you, community information, or any theme that is of importance to your organisation.

Inmagic.net makes it easy to add Web pages to the portal textbase.

First textbase fields are mapped to the information that is to be saved about each page.



Then the *Catalogue Current Web Page* icon is clicked to save data to a Portal textbase record.



Contact Maxus for advice about the Portal, or other textbase applications designed to make access to information efficient and easy!